

FACTORY-APPLIED SYSTEM

Thin Brick by Owensboro panels are a factory-assembled system featuring genuine clay kiln-fired 1/2" thin brick adhered to a rigid insulation fiber (black board) or cement board backer (Durock®). Panel Brick weighs less than six lbs per sq ft on black board and less than nine lbs per sq ft on cement board.



• DUROCK® PANEL SYSTEM*

This panel system is a 16" x 48" concrete backer board used with Thin Brick that is pre-applied at the factory. This product is designed for exterior and interior usage. The product is strong, durable and perfect for just about any application. Durock® is manufactured by USG, one of the premier concrete board manufacturers in both the United States and abroad.

• QUIET BRACE® BLACK BOARD*

The rigid backer board used to create Panel Brick is a high density, nail base, asphalt impregnated fiberboard manufactured by Temple-Inland® Corporation. Quiet Brace® is a lighter weight and less expensive alternative to the Durock® panel. Recommended for interior use only.

ADHESIVES

An exterior, waterproof, synthetic rubber based adhesive that complies with APA specification AFG-01 is used to bond Thin Brick to the backer board. Field applied mortar creates a chemical and mechanical bond when installation is complete.

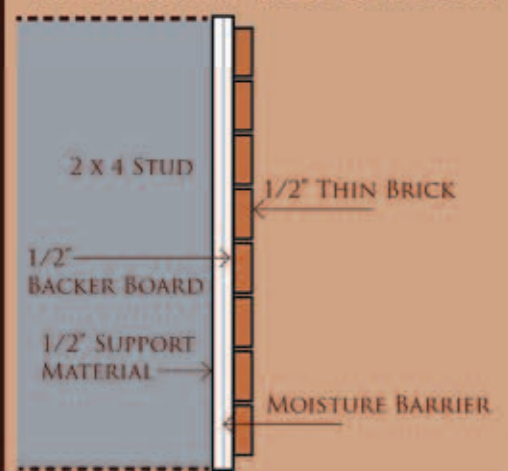
ASSEMBLY AND INSTALLATION

Installation of Panel Brick is a straight forward construction procedure. No highly skilled labor required to install. Please visit our website for a detailed installation guide.

**Meets Federal specification LLL-1-535B, Class E, Style 2 conforms to Industry Standards ANS/AHA A194, 1-1985 Type IV, Class 2 and ASTM C-208-94. UL tested 1 hour fire rating.*

DUROCK® BOARD AND TEMPLE-INLAND® BOARD

PANEL APPLICATION



SIZE	
Panels	16" x 48" x 1" thick
COVERAGE	
Panels	5.33 square feet per panel Approximately 19 panels per square. One square covers 100 square ft.
WEIGHT	
Panels	28 lbs. per black board panel 40 lbs. per cement board panel
PACKAGING	
Panels	91 panels per pallet (black board) 70 panels per pallet (cement board)
MORTAR	
Mortar	One 80 lb. bag covers approximately 50 square feet of wall space.



Catch the Green Wave!

We Use Less of Everything

- 80% LESS Shale used in product
- 80% LESS Energy used to fire
- 80% LESS Energy used to transport
- L/600 vs. L/360 for Thin Brick Panel Systems



So You Can Use Less of Everything

- 80% LESS Mortar used with Thin Brick
- 40% LESS Labor than Full size
- NO Lintels or additional footers required
- NO highly skilled labor required to install
- Great for use with ICF wall systems

Do MORE when you Go Green!

Owensboro Brick offers two sizes of Tumbled Thin Brick (Tumbled and Straight). Our Modular brick is the standard 2-1/4" x 7-1/2" x 1/2" size, but we also offer an Oversized brick that is 2-3/4" x 7-1/2" x 1/2" in size.



THIN BRICK *by Owensboro*

P.O. BOX 907
1120 EWING ROAD
OWENSBORO, KENTUCKY 42302

270-684-7268
270-685-5128

WWW.THINBRICKBYOWENSBORO.COM



THIN BRICK *by Owensboro*

Crafting quality thin brick, panel brick and full size brick, and delivering it with unsurpassed customer service, have been the hallmarks of our 50+ year history in the brick manufacturing business.

We are proud Thin Brick by Owensboro has been specified and used on high profile projects throughout the US and abroad. Renowned retail companies have successfully integrated our thin brick products into their building designs.

- Burger King •Harley Davidson •CVS Pharmacy
- Pizza Hut •Tumbleweed •McDonald's
- Old Chicago Pizza •Zaxby's Chicken •GAP
- Urban Outfitters •Free People •Pret-a-Manger

Let us show you how Thin Brick can enhance your project!



P.O. BOX 907 • OWENSBORO, KENTUCKY 42302 • 270-684-7268 • 270-685-5128



THIN BRICK *by Owensboro*

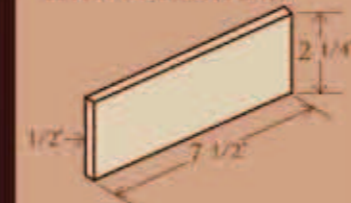
Available in Modular and Queen/Engineer in Full size and in THIN brick.

Straight Edge, Textured & Simulated Tumbled

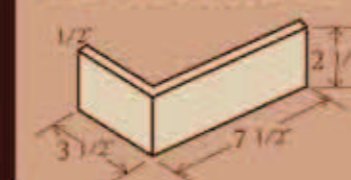
THIN BRICK AND THE BENEFITS OF GOING LIGHT WEIGHT

MODULAR

THIN BRICK (FLAT)



THIN BRICK (CORNER)



SIZE
Thin Brick 7 1/2" x 2 1/4" x 1/2" thick
Corners 2 1/2" x 3 1/2" x 7 1/2" x 1/2" thick

COVERAGE
Thin Brick 7.0 pieces per square foot
Corners 4.5 pieces per linear foot

WEIGHT
Thin Brick 11 oz. per piece
Corners 15 oz. per piece

PACKAGING
Thin Brick Retail boxes & bulk boxes available
Corners Retail boxes & bulk boxes available

MORTAR
Mortar One 80 lb. bag covers approximately 50 square feet of wall space.



SIZE
Thin Brick 7 1/2" x 2 1/4" x 1/2" thick
Corners 2 1/2" x 3 1/2" x 7 1/2" x 1/2" thick

COVERAGE
Thin Brick 6.0 pieces per square foot
Corners 3.64 pieces per linear foot

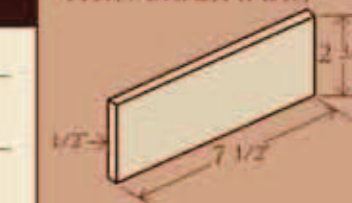
WEIGHT
Thin Brick 14 oz. per piece
Corners 1 lb. per piece

PACKAGING
Thin Brick Retail boxes & bulk boxes available
Corners Retail boxes & bulk boxes available

MORTAR
Mortar One 80 lb. bag covers approximately 50 square feet of wall space.

QUEEN/ENGINEER

THIN BRICK (FLAT)



THIN BRICK (CORNER)



COLOR VARIETIES FOR THIN BRICK / PANEL BRICK

New Color



Alpine



Plantation



Flash Martingale



Greywood



King William



Martingale



Old Lexington



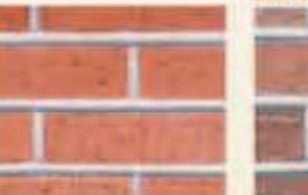
Old Oakley



Sierra



Springfield



Regatta Red



Moss

COLOR VARIETIES FOR TUMBLED THIN BRICK / PANEL BRICK

New Color



Monterey



Imperial Brown Tumbled



Allentown Tumbled



Southern Rose Tumbled



Greywood Tumbled



King William Tumbled



Sierra Tumbled



Flashed Martingale Tumbled



Platte Canyon

